

Lucy O'Doherty
The Calm and the Storm
10.06.2022



Child
HOIGHTS

Lucy O'Doherty's 'The Calm and the Storm' explores subject matter inspired by the increased focus on the intimacy of home life in recent years due to the pandemic, as well as the increasing frequency of extreme weather conditions outside of the home.

A play on the saying the calm before the storm, 'The Calm and the Storm' contrasts the tranquillity of the domestic realm against the landscape that melts and rages around us, noting how we are living in a peculiar and unsustainable age where the 'calm' of increased time at home and the 'storm' of climate emergencies seem to be happening all at once.

The lockdowns of recent years have inspired attempts at new subject matter whilst spending more time indoors, resulting in O'Doherty's motifs of domestic scenery being examined with an even more intimate lens. Still lifes and portraits are genres previously unexplored through past bodies of work however during the unpredictability of recent times they have provided her with a sense of calm and proximity to loved ones during long days indoors.

Alongside the quietude of the lockdown lifestyle, anxieties over extreme weather events have grown more and more acute. Lucy became interested in painting the strange glowing forms of melting icebergs and trees whipped by wind during hurricanes whilst being commissioned to create artworks for 'Climate Emergency: Feedback Loops', a series of educational short films. The devastating floods in New South Wales and Queensland this year and persistent storms and rainfall due to La Niña have also had an impact on the type of landscapes depicted.

The jarringly different subjects explored in this exhibition appear dreamlike, they can flicker between the pleasant and the familiar to suddenly life-threatening. "My dreams often unfold in this way, one moment I'm walking through the corridors of my family home and the next overwhelmed by a tidal wave."

Viewing this exhibition will give some sense of wandering through a dream, with hazy, warm moments of familiarity interrupted by the anxieties and danger of a world increasingly melting and morphing before our eyes



Soft rock

Oil on linen
40cm x 30cm



Soft glow in empty cinema

Oil on linen
76.5cm x 101.5cm



An unexpected storm

Oil on linen
72cm x 97cm



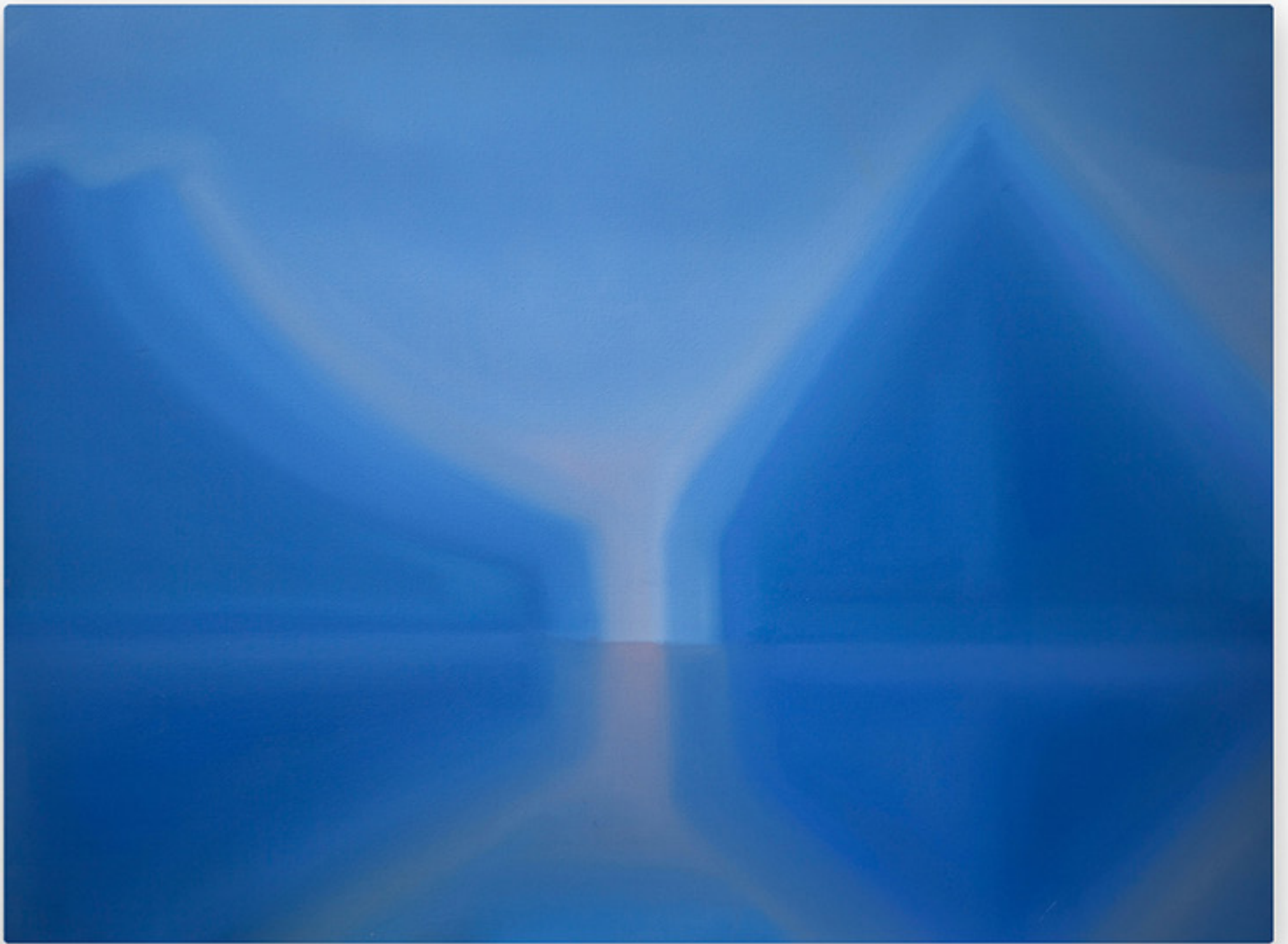
Swaying mushroom

Soft pastel on paper
43.5cm x 43.5cm



Smog obscured view from LA pool

Soft pastel on paper
80cm x 65cm



Blue fjord (Piopiotahi)

Oil on linen
76.5cm x 101.5cm



Cracks in ancient stone

Soft pastel on paper
62cm x 59cm



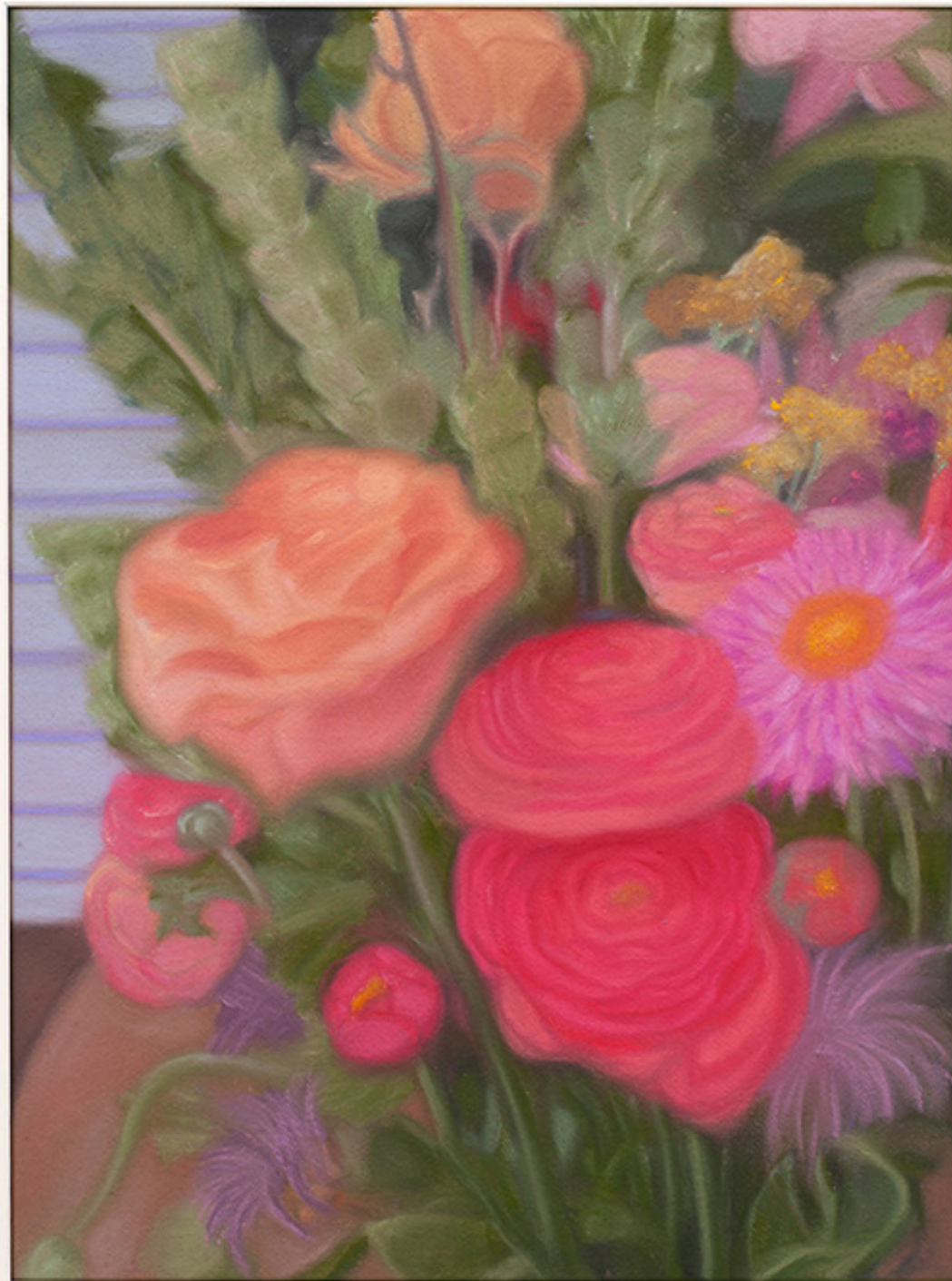
Melting all the time

Soft pastel on pastel board
56.5cm x 60cm



Insolent grey cat

Soft pastel on paper
62cm x 59cm



Moments of brightness

Soft pastel on paper
68cm x 85.5cm



Heat struck pool

Oil on linen
76.5cm x 101.5cm



Mint house on a dusty afternoon

Soft pastel on paper
80cm x 64.5cm



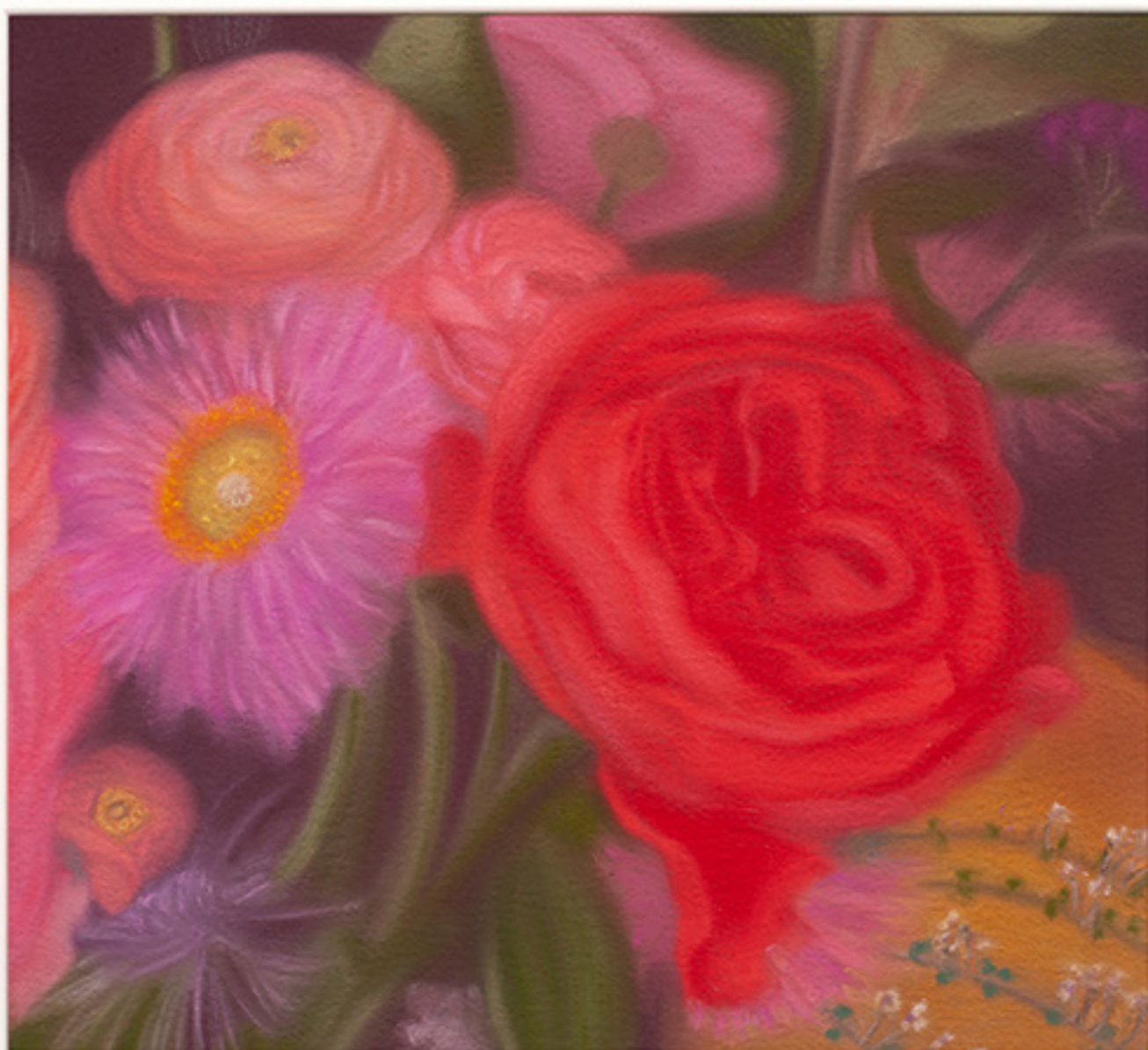
Magenta storm

Soft pastel on paper
62cm x 59cm



Leaning flowers

Soft pastel on paper
53.5cm x 47.5cm



A curve of red

Soft pastel on paper
62cm x 59cm



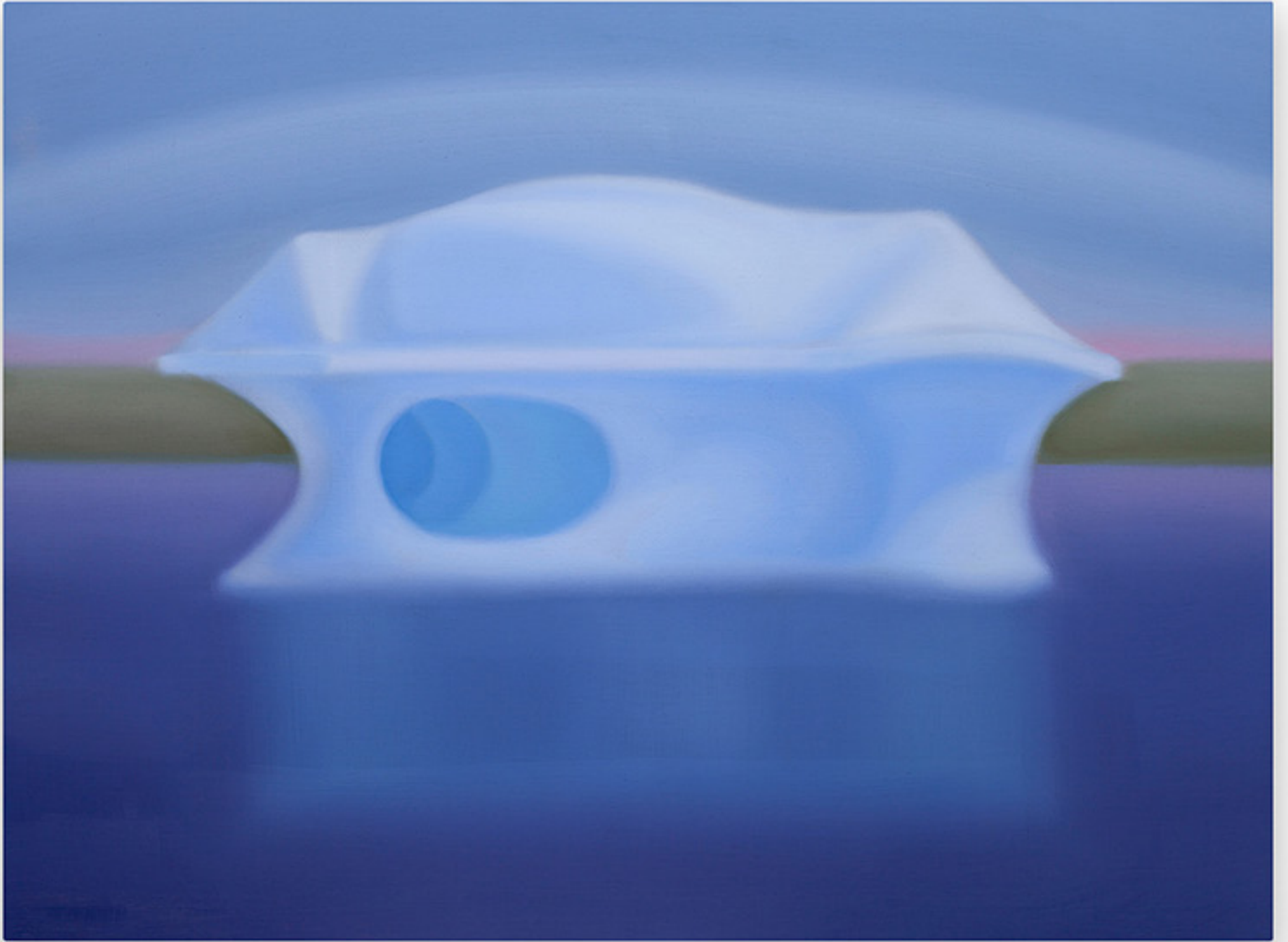
The curved house

Soft pastel on paper
80cm x 64.5cm



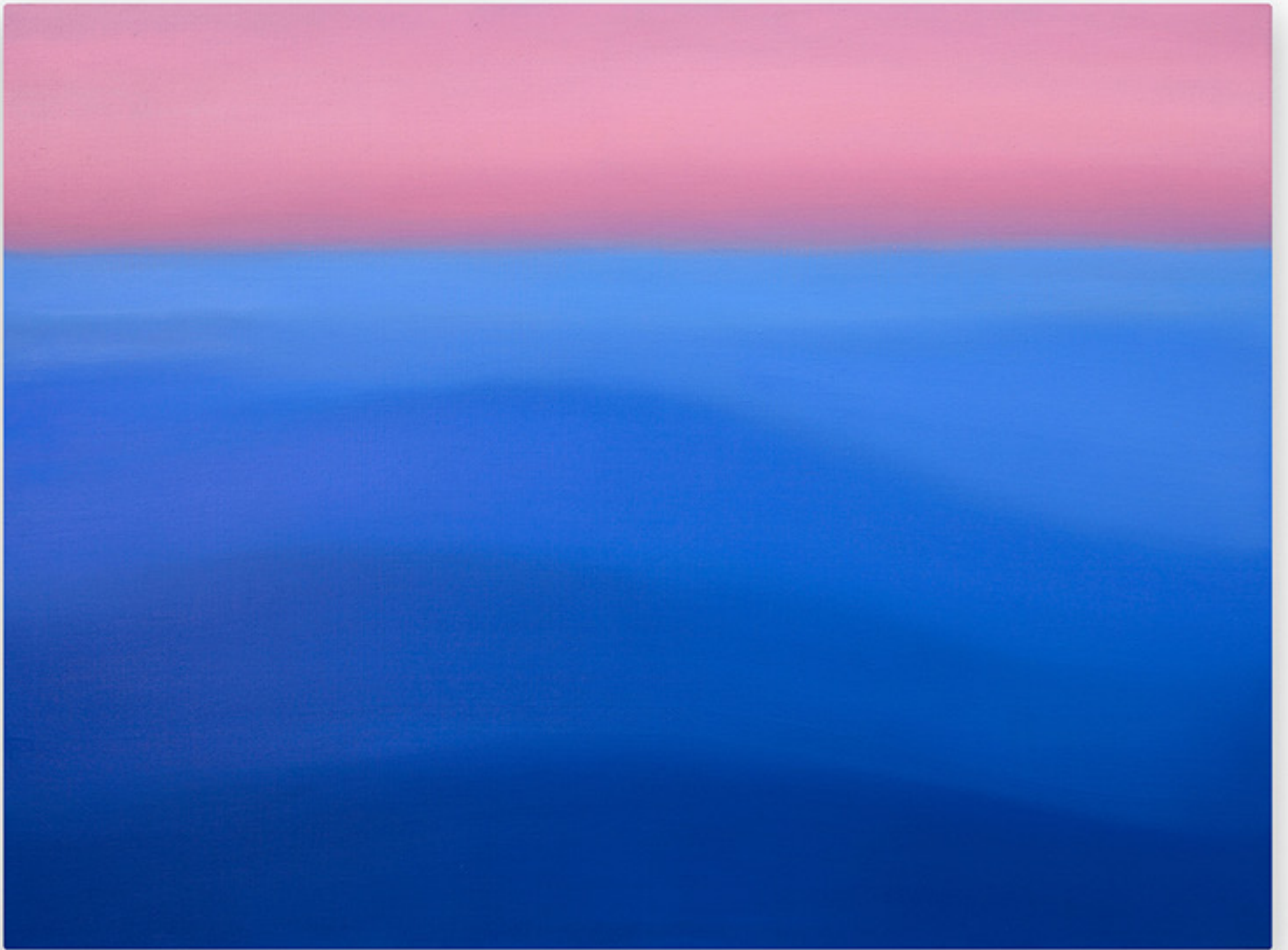
Wind whipped tree and pink moon

Oil on linen
40cm x 30cm



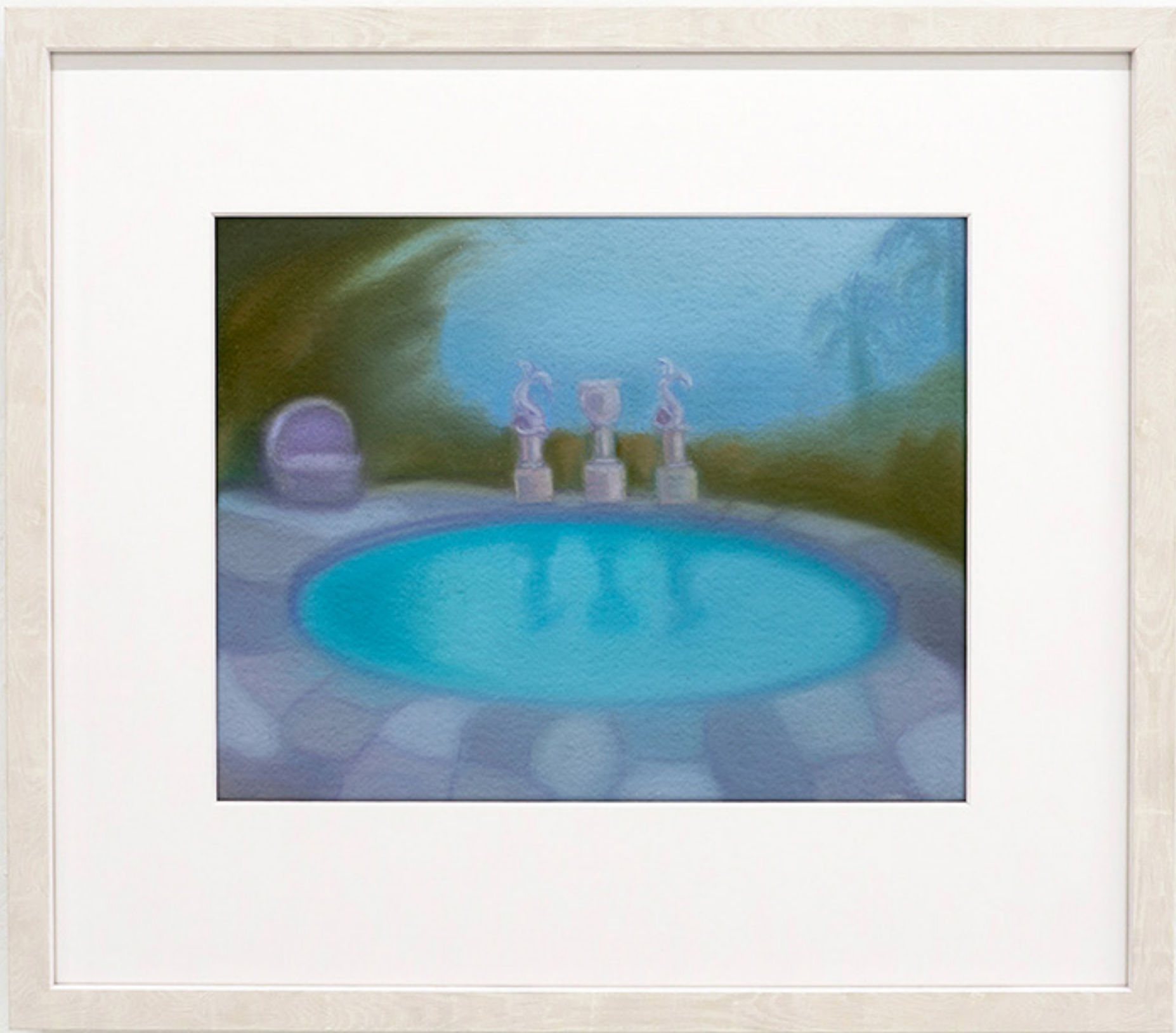
Ice tunnel

Oil on linen
60cm x 80cm



Diminishing blue

Oil on linen
60cm x 80cm



Gaping fish statues, LA pool

Soft pastel on paper
53.5cm x 46.5cm



Dad and his cat

Soft pastel on paper
58cm x 75cm



Moon, ocean, humans

Soft pastel on paper
88.5cm x 54cm



China
HEIGHTS

gallery@chinaheights.com